

# MONTHLY MEMBERSHIP PROGRESS REPORT

LOCATION HUNGARY

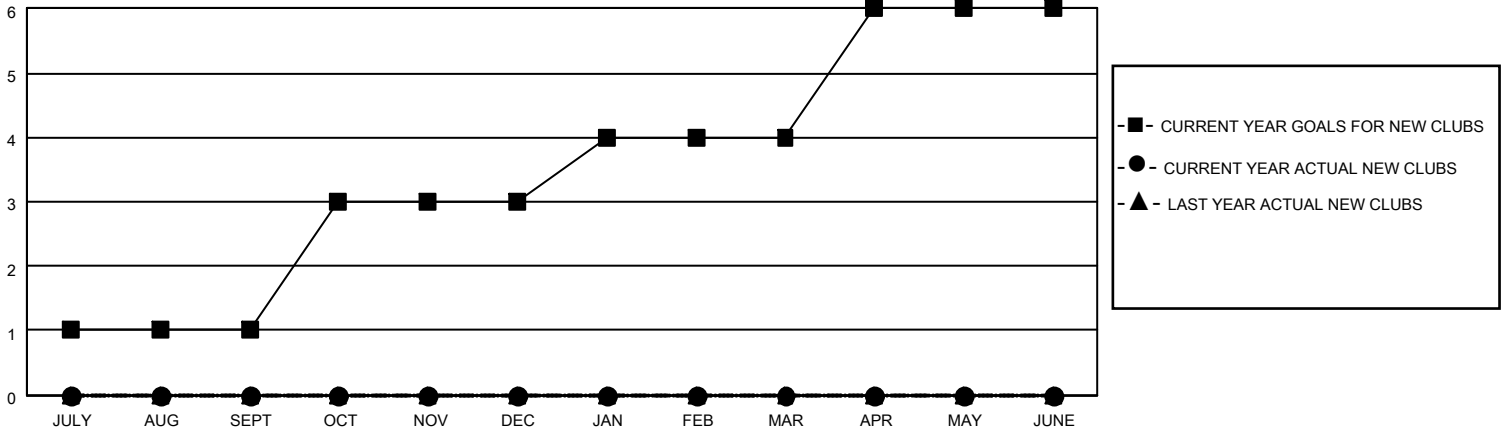
District 119

Results as of: 5/31/2023

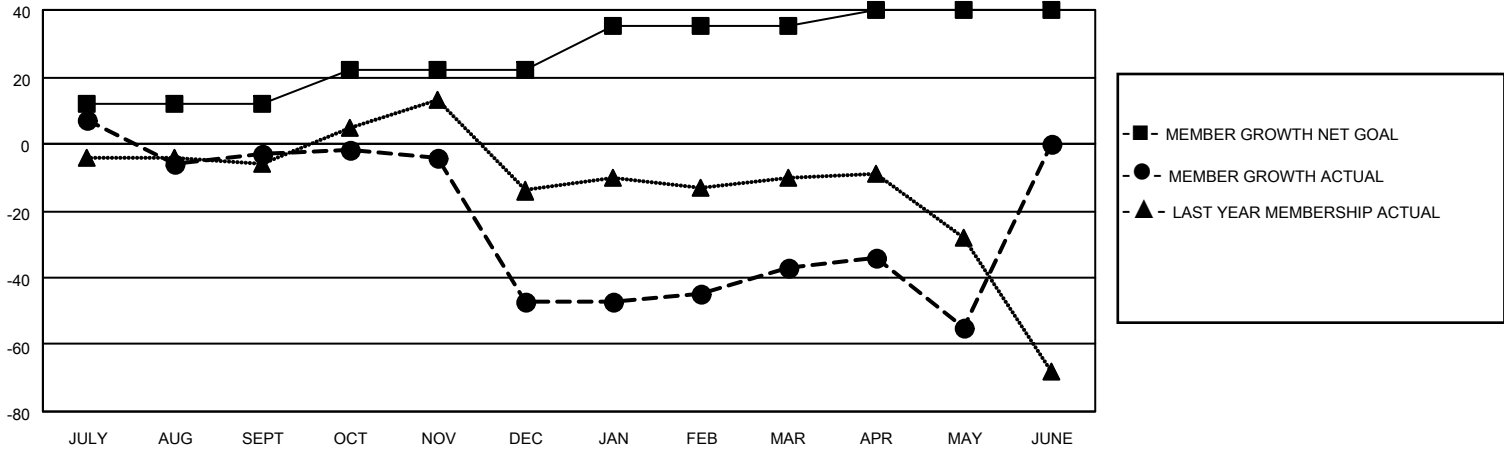
Clubs			
RESULTS FOR 2022-2023			
QUARTER	NEW CLUB GOAL	NEW CLUBS	DROPPED CLUBS
JULY/AUG/SEPT	1	0	2
OCT/NOV/DEC	2	0	2
JAN/FEB/MAR	1	0	0
APR/MAY/JUNE	2	0	0

Members			
RESULTS FOR 2022-2023			
QUARTER	MEMBER GROWTH NET GOAL	MEMBER GROWTH ACTUAL	DROPPED MEMBERS ACTUAL (including transfers)
JULY/AUG/SEPT	12	43	23
OCT/NOV/DEC	10	11	53
JAN/FEB/MAR	13	20	9
APR/MAY/JUNE	5	6	24

**GOALS AND ACTUAL NEW CLUBS CUMULATIVE**



**GOALS AND ACTUAL MEMBERS CUMULATIVE**



DROPPED CLUBS: 4	
<b>DROPPED MEMBERS</b>	
DECEASED	2
CLUB CANCELLED	26
OTHER	81
<b>TOTAL</b>	<b>109</b>

22 CLUBS OF 43 ADDED 1 OR MORE NEW MEMBERS

[CLICK HERE FOR CUMULATIVE MEMBERSHIP DATA](#)

<u>GENDER DISTRIBUTION</u>	
MALE	482 (57.93%)
FEMALE	350 (42.07%)
NON BINARY	0 (0.00%)
PREFER NOT TO ANSWER	0 (0.00%)
<b>TOTAL FAMILY UNIT MEMBERS</b>	<b>152</b>
<b>FAMILY MEMBERS PAYING HALF DUES</b>	<b>77</b>